



# Coffee Break Training - Emergency Medical Services

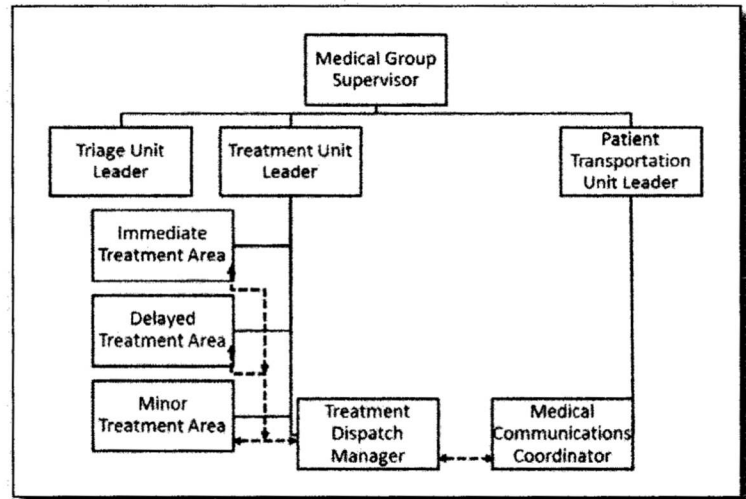
## Medical Components of the Incident Command System: Part 1

No. EMS-2015-4 March 25, 2015

Learning Objective: The student will understand the Treatment Dispatch Manager's responsibilities.

**T**reatment Dispatch Manager: The Treatment Dispatch Manager reports to the Treatment Unit Leader and is responsible for coordinating with the Patient Transportation Unit Leader (or Group Supervisor if established) the transportation of patients out of the Treatment Areas:

- Review Common Responsibilities (Page 1-2).
- Establish communications with the Immediate, Delayed, and Minor Treatment Managers.
- Establish communications with the Patient Transportation Unit Leader.
- Verify that patients are prioritized for transportation.
- Advise Medical Communications Coordinator of patient readiness and priority for transport.
- Coordinate transportation of patients with Medical Communications Coordinator.
- Ensure that appropriate patient tracking information is recorded.
- Coordinate ambulance loading with the Treatment Area Managers and ambulance personnel.
- Maintain Unit/Activity Log (Incident Command System Form 214).



For additional information regarding the Treatment Dispatch Manager's responsibilities, the U.S. Fire Administration/National Fire Academy Field Operations Guide can be accessed at <http://feti.lsu.edu/municipal/NFA/TRADE/materials/TRADE%20CD%20XVI//WebHelp/index.htm>.